

Lead2Passed



Lead2Passed

HOME

ALL VENDORS

★ GUARANTEE

? FAQ

TESTIMONIALS

Login / Register My Shopcart (1)

Input your exam code ...



Try before you buy

Download a free sample of any of our exam questions and answers

- ✓ Online Test Engine: Online Tool, Convenient, easy to study. Instant Online Access. Supports All Web Browsers.
- ✓ PDF format: Easy to read and print learning materials, our products are available in PDF file format.
- ✓ Desktop Test Engine: Installable Software Application. Simulates Real Exam Environment. Practice Offline Anytime.



Security & Privacy

We respect customer privacy. We use McAfee's security service to provide you with utmost security for your personal information & peace of mind.



365 Days Free Updates

Free update is available within 365 days after your purchase. After 365 days, you will get 50% discounts for updating.



Money Back Guarantee

Full refund if you fail the corresponding exam in 60 days after purchasing. And Free get any another product.



Instant Download

After Payment, our system will send you the products you purchase in mailbox in a minute after payment. If not received within 2 hours, please contact us.

<http://www.lead2passed.com>

Valid Certification Exam Dumps Materials and Study Guide -
Lead2Passed

Exam : **E20-885**

Title : VNX Solutions Expert Exam for
Implementation Engineers

Vendor : EMC

Version : DEMO

NO.1 A customer recently upgraded from vSphere v4.x to vSphere v5.0 to benefit from new VMFS-5 features for their existing 'DataStore1' and 'DataStore2' datastores on an EMC VNX.

A second identically configured VNX was implemented and the customer created two additional datastores on the new VNX.

After monitoring the environment, the customer notices the VMs on 'DataStore1' and 'DataStore2' are not using the same sub-block structure as the two new datastores.

What is the reason for this behavior?

- A. The old VMs are on an upgraded VMFS-5 datastore.
- B. The old VMs are still running old VMware tools.
- C. The new VMFS-5 features need to be licensed and activated.
- D. The new VMFS-5 cannot support two VNX storage systems.

Answer: A

NO.2 A customer wants to implement a DR solution on two VNX for File located at a primary and a backup site. They have three VDMs, each with a CIFS file system providing shares for sales, finance and marketing. What must be configured for a successful failover?

- A. The Data Movers associated with the VDM replication must have identical interface names.
- B. The VDM root file system should be configured on storage with identical RAID types.
- C. The VDM should be built on the same user file system that contains the CIFS share.
- D. The Data Movers associated with the VDM replication must have identical physical network devices.

Answer: A

NO.3 A customer uses MirrorView/S to replicate their production data from Site A to Site C.

The production Oracle server is located at Site A and has access to LUNs 101 and 102.

LUNs 101 and 102 are placed in a consistency group.

Site A experiences a disaster and production moves to Site C.

What configuration change is needed to provide the Oracle server access to Site C's LUNs 101 and 102?

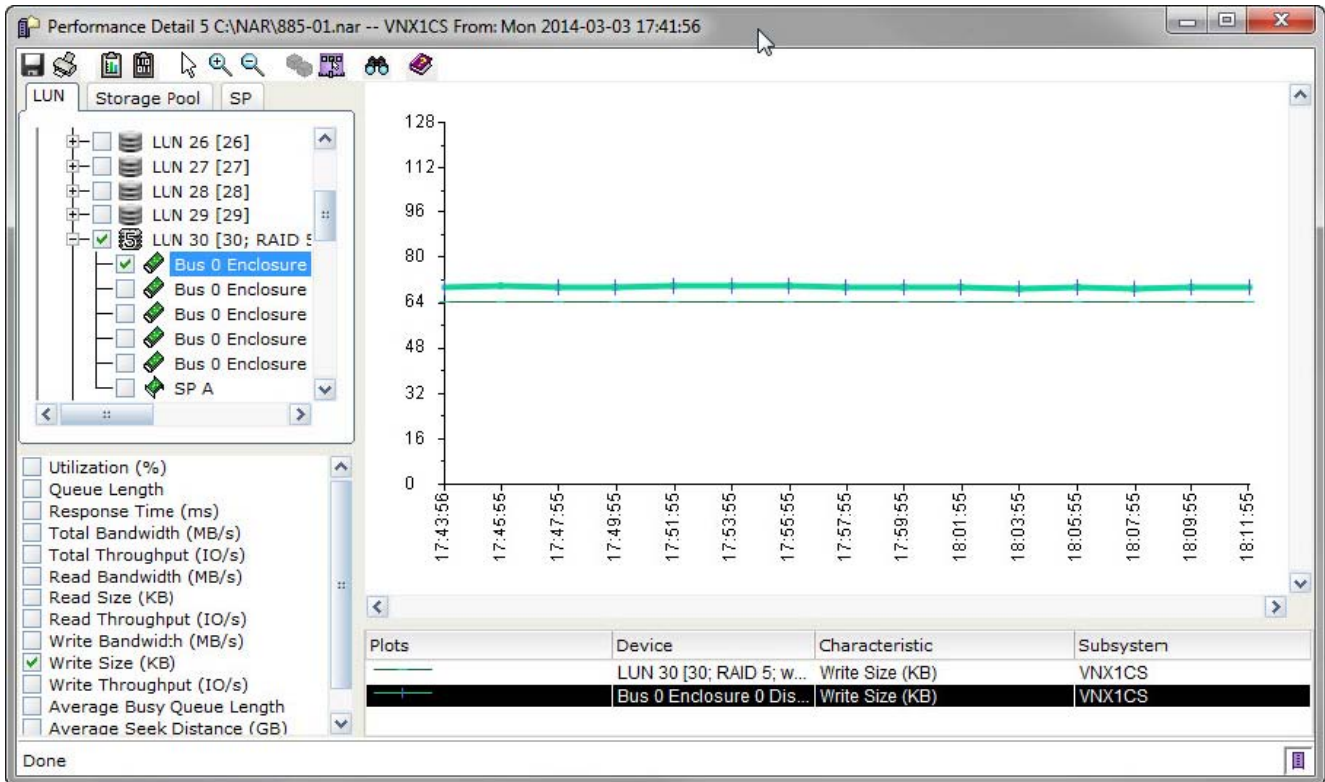
- A. Promote the Secondary Image.
- B. Connect the Oracle server to the appropriate storage group.
- C. Add the Secondary Image to the appropriate storage group.
- D. Fracture the mirror.

Answer: A

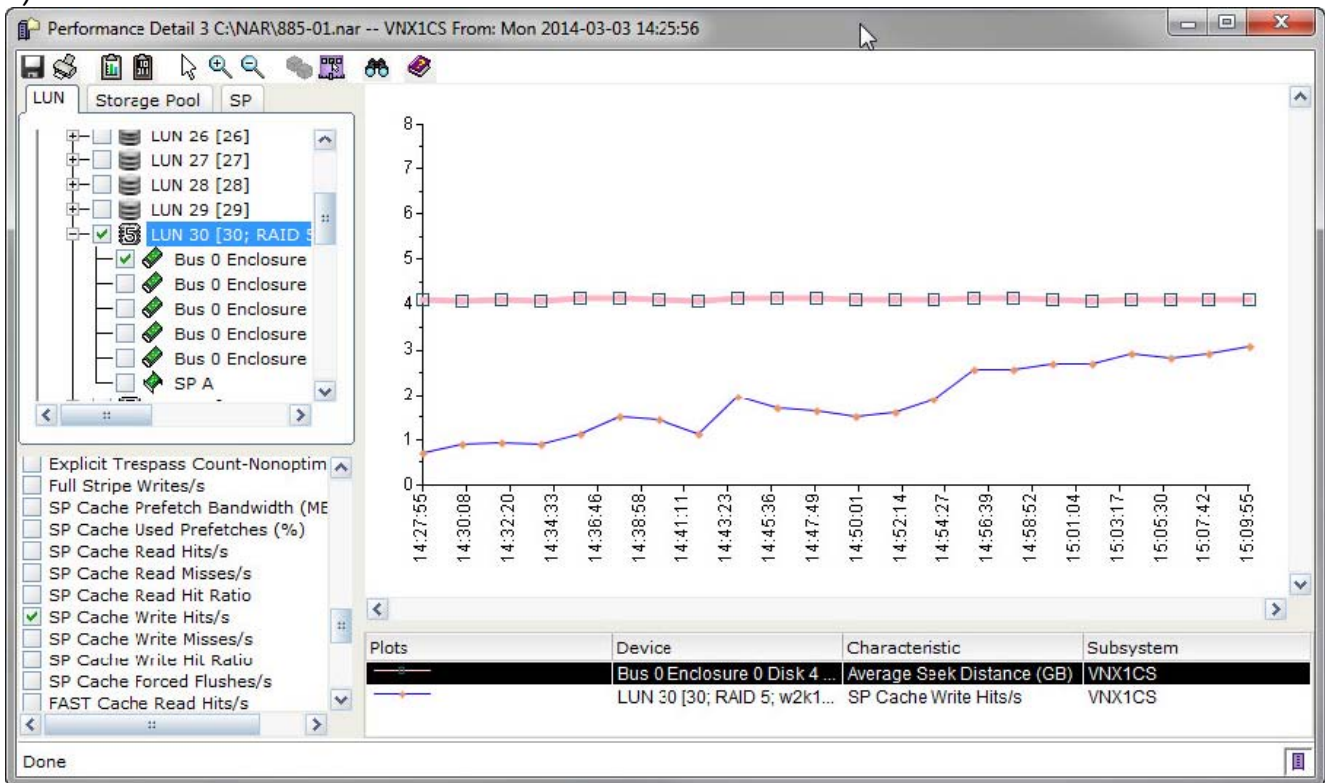
NO.4 You are implementing FAST Cache. You want to disable FAST Cache on any LUNs that do not have the correct I/O access pattern for FAST Cache. All LUNs are 4+1 R5, with sizes between 50 GB and 500 GB.

Which answer shows an access pattern that should benefit from FAST Cache?

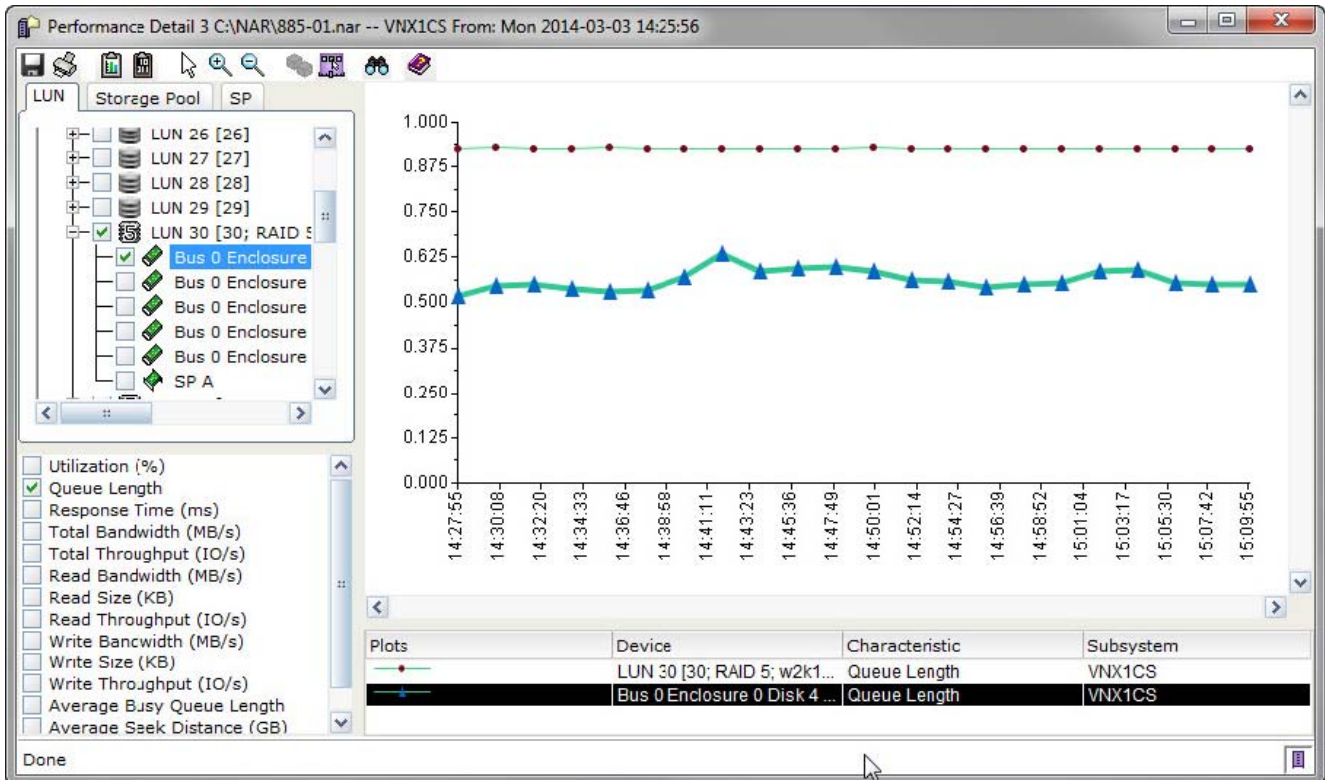
A)



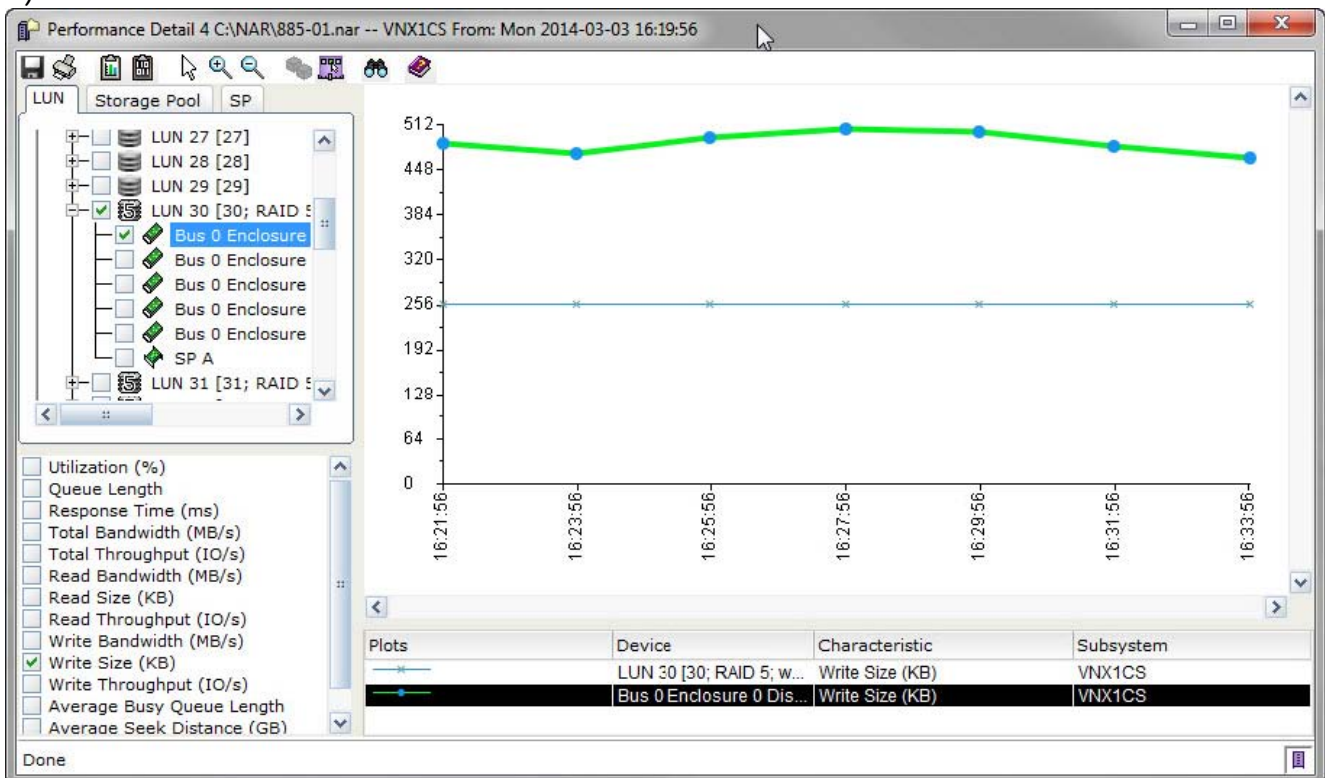
B)



C)



D)



- A. Exhibit A
- B. Exhibit B
- C. Exhibit C
- D. Exhibit D

Answer: A

NO.5 An EMC VNX with FAST Suite will be used as block storage for a mail environment with four Exchange 2010 servers. The Exchange servers will serve as mailbox and archive mailbox servers. The VNX has the following disks in two DAEs:

- Five 200 GB Flash drives
- Fifteen 600 GB SAS drives
- Ten 2 TB NL-SAS drives

What storage pool design will provide balance between performance and storage provisioning?

- A. Database pool LUNs should be thin provisioned; log pool LUNs should be thick provisioned.
- B. All pools should be provisioned as thick pool LUNs only.
- C. All pools should be provisioned as thin pool LUNs only.
- D. Database pool LUNs should be thick provisioned; log pool LUNs should be thin provisioned.

Answer: B

NO.6 You are installing a new VNX and need to implement a Storage Pool on the array. Disks are available and must be set up as follows:

10, 400 GB SSD in R10 (4+4) for the Extreme Performance tier
13, 600 GB + 15K SAS R10 (4+4) for the Performance tier
12, 4 TB NL-SAS R6 (14+2) for the Capacity tier

Disks for FAST Cache, Vault, and unbound disks for sparing, are allocated separately.

How should you lay out the private RAID groups?

- A. Extreme Performance tier: 1 R10 (4+4) + 1 R10 (1+1)
Performance tier: 2 R5 (4+1) + 1 R5 (2+1)
Capacity tier: 1 R6 (10+2)
- B. Extreme Performance tier: 1 R10 (5+5) + 2 unbound
Performance tier: 2 R5 (4+1) + 1 R5 (2+1)
Capacity tier: 1 R6 (10+2)
- C. Extreme Performance tier: 1 R10 (4+4) + 1 R10 (1+1)
Performance tier: 2 R5 (4+1) + 1 R5 (2+1)
Capacity tier: 1 R6 (4+2) + 1 R6 (4+2)
- D. Extreme Performance tier: 1 R10 (4+4) + 2 unbound
Performance tier: 2 R5 (4+1) + 1 R5 (2+1)
Capacity tier: 1 R6 (4+2) + 1 R6 (4+2)

Answer: A

NO.7 A customer wants to deploy an Exchange 2010 farm doing 8,400 IOPS with a R/W ratio of 1/1. The total amount of space needed is 7,500 GB.

What would you recommend the storage configuration to be?

- A. A pool consisting of five 100 GB eMLC Flash drives, and 30 drives of 300 GB 15K in RAID 5, with FAST-VP enabled
- B. A pool consisting of five 100 GB eMLC Flash drives in RAID 5, and 20 drives of 300 GB 15K in RAID 5, with FAST-VP enabled
- C. A pool consisting of 120 drives of 300 GB 15K, in RAID 5 (4+1)

D. A pool consisting of 120 drives of 600 GB 15K, in RAID 5 (4+1)

Answer: A

NO.8 A vSphere ESXi v5.0 administrator receives an alert that a VM (virtual machine) has been paused. What action should they take to resume this VM's operation?

- A. Add additional storage to the thin-provisioned storage of the VM.
- B. Restart a fractured MirrorView replication session on the VM's datastore.
- C. Restore a failed network link on the ESXi server's teamed network interface adapters.
- D. Ensure that one of the VM's applications is not pinned to a failed vCPU.

Answer: A

NO.9 What do primary and standby Control Stations use to monitor each other?

- A. nasmcd
- B. shared quorum disk
- C. nbsnas
- D. nasdb

Answer: B

NO.10 An implementation engineer installs a DR solution to protect ten CIFS servers at site A.

VNX Replicator will be used to replicate these servers and their shares from Site A to Site

B. How many Virtual Data Movers should be configured for the servers to be protected on Site A to ensure maximum portability?

- A. 5
- B. 10
- C. 20
- D. 1

Answer: B

NO.11 A customer plans to use SAN Copy to make consistent copies of their Windows 2003 and 2008 production environment at their remote site. Before starting the SAN Copy session, what action should they take to ensure any pending I/O from the buffers is committed?

- A. admhost lun_flush
- B. admhost lun_deactivate
- C. admhost lun_activate
- D. admhost lun_update

Answer: A

NO.12 A customer requires their FAST Cache configuration to be destroyed in order to increase FAST Cache size. However, they are concerned about the performance impact that this will cause.

What should you tell the customer to expect?

- A. Increased write activity on data disks from LUNs that were FAST Cache enabled
- B. Increased write activity on FAST Cache disks from LUNs that were FAST Cache enabled
- C. Temporary suspension of all write I/O to DRAM cache

D. Temporarily bypass of DRAM cache by all write I/O

Answer: A

NO.13 A customer plans to connect ESXi 5.0 hosts to a new EMC VNX array. They want to take advantage of the hardware-assisted locking feature in VAAI. Which is a feature of hardware-assisted locking?

- A. Locking at the block level of a logical unit
- B. Locking the LUN instead of the block level
- C. Accessing a block from multiple hosts at the same time
- D. Automatic enabling of safe data caching

Answer: A

NO.14 A customer is migrating an Oracle database to a new EMC VNX. The database consists of random, small I/O workloads with high transaction rates.

What RAID type should be used for the LUN containing the data files in order to prevent I/O bottlenecks during peak load?

- A. RAID 6
- B. RAID 3
- C. RAID 1/0
- D. RAID 5

Answer: C

NO.15 A customer has implemented RecoverPoint/CDP to replicate their Oracle database environment. They must be able to recover the database in the event corruption occurs during replication. What action do you recommend to ensure a point-in-time recoverability of the database?

- A. Back up the control file to trace
- B. Copy the control file to a different LUN
- C. Use SnapView snapshots to protect the control files
- D. Copy the redo logs to a different LUN

Answer: A